

**Swale Community  
Safety Partnership**



**Swale Community Safety  
Plan  
2022/23**

## Contents Page

<b>Section</b>	<b>Page Number</b>
Introduction	2
Background	2
Key activities delivered over the past year	2
Strategic Drivers	3
Priorities and cross cutting themes for next 12 months <ul style="list-style-type: none"><li>▪ <b>Domestic Abuse</b></li><li>▪ <b>Crime</b></li><li>▪ <b>ASB</b></li><li>▪ <b>Supporting Vulnerable People</b></li><li>▪ <b>Reducing Re-Offending</b></li><li>▪ <b>Communication and Information Sharing</b></li><li>▪ <b>Young People</b></li></ul>	4
Action Plan 2022/23	11
Delivery Mechanisms	16
Performance Management	17
Risk Assessment	17

## Contacting the CSP

Please email us at [csu@swale.gov.uk](mailto:csu@swale.gov.uk).

Visit the website for more information on the Partnership, along with updates on our activities and key crime reduction advice – [www.swale.gov.uk/community-safety](http://www.swale.gov.uk/community-safety)

# Swale Community Safety Plan 2022/23

## 1. Introduction

The Swale Community Safety Plan highlights how the Community Safety Partnership (CSP) plans to tackle community safety issues that matter to the local community.

This Plan is revised on an annual basis, through reviewing information provided from a wide range of organisations in a strategic assessment, to ensure that current issues can be taken into account into the activities undertaken by the CSP. It also takes into account local emerging issue and new legislative requirements.

## 2. Background

Swale CSP is a statutory body bringing together a number of public sector agencies to tackle crime, disorder, anti-social behaviour, substance misuse and reduce re-offending. These agencies include Swale Borough Council, Kent County Council, Kent Police, Kent Fire and Rescue Service, Probation services, and Health services, working closely with the local housing associations such as Optivo, voluntary and community sector organisations and HM Prison Service.

## 3. Key activities delivered during the previous year

A number of activities have been delivered by the Community Safety Partnership in order to address its priorities for 2021/22, however some performance continues to have been impacted by the covid-19 pandemic. Highlights that have been delivered include the following:

- **Support to domestic abuse victims:** Local domestic abuse support services have worked tirelessly to ensure that victims have access to their services following further covid restrictions. Services have had their delivery mechanisms and locations amended, with additional locations and services added to seek to reach those in most need.
- **Violence Against Women and Girls:** Following a number of national cases, a Violence Against Women and Girls action plan was created and delivered for Swale. This has seen key safety messages for women and girls including highlighting safety Apps such as the Hollie Guard App; extra patrolling in key locations; and self-defence sessions for women and girls. Swale CSP has also been reaccredited as a White Ribbon Borough, with its Ambassadors continuing to highlight that violence against women will not be tolerated.
- **Resolving Location Problems:** The Community Safety Unit has coordinated a response to a number of locations highlighted as hotspots for ASB and Crime. This has included within Murston, Thistle Hill, Sittingbourne and Sheerness Town Centres. A problem-solving approach has been taken and has seen a reduction in ASB in each of these locations.
- **Vulnerability Panel:** The Vulnerability Panel is a multi-agency group to discuss adults who are at risk of becoming victims of ASB/crime; that are not engaging with services; and/or at risk of self-neglect. The number of referrals to this panel continues to increase, but with excellent engagement from partners has seen a large number of successes in supporting these customers.

## 4. Strategic Drivers

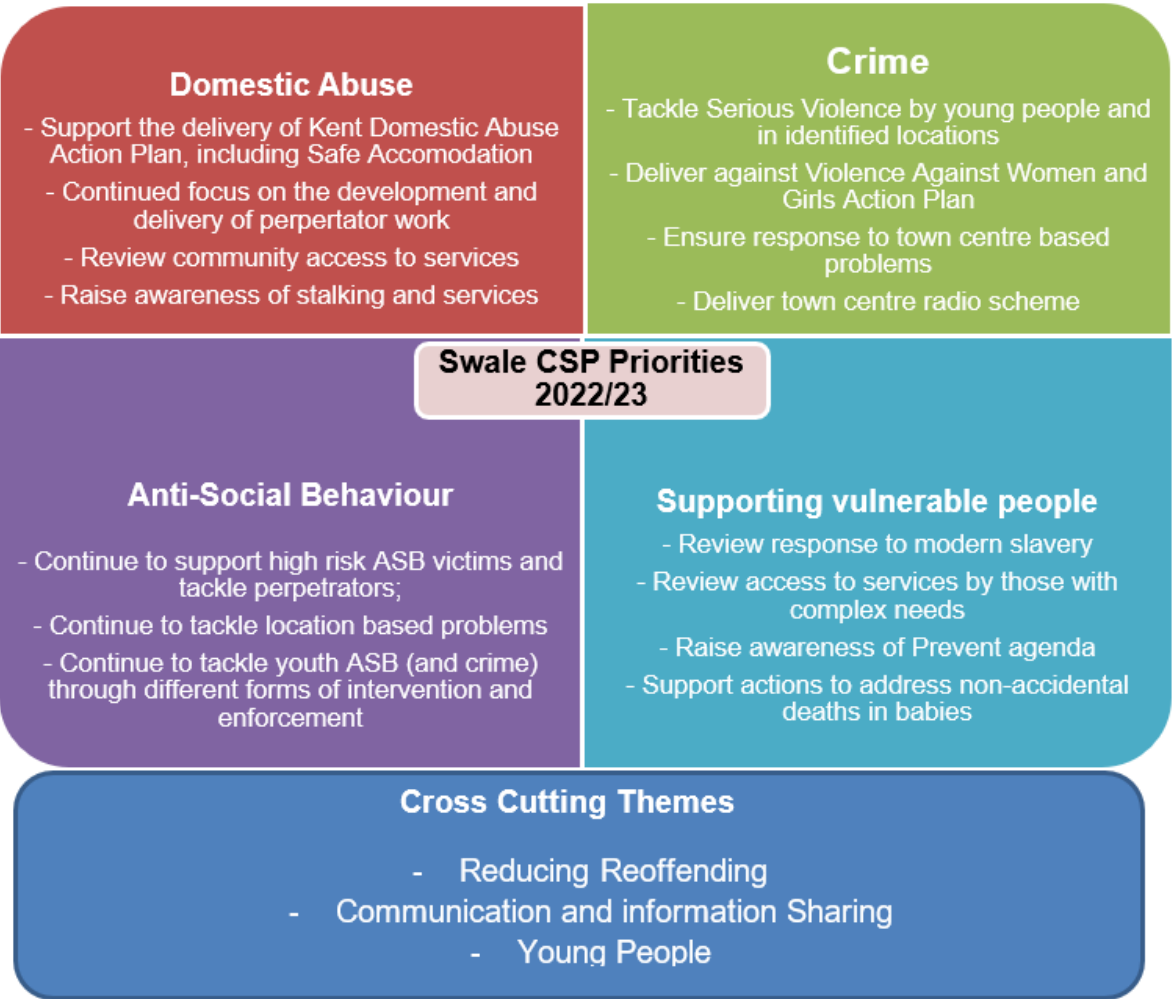
- Domestic Abuse Act 2021: The Domestic Abuse Act 2021 was enacted in April 2021. Agencies are working through the new duties placed upon them to ensure that they are compliant. A new multi-agency Domestic Abuse Local Partnership Board has been formed, embedded in existing domestic abuse partnership working; and the Kent and Medway Domestic Abuse Strategy has been refreshed (focusing on Safe Accommodation). Swale CSP has a role to play in developing and supporting the delivery of the action plan accompanying this refreshed strategy, not just for the 'safe accommodation' theme, but across all areas of this business.
- Serious Violence Duty: Legislation is being formed to place a duty to tackle Serious Violence on CSPs (and other responsible authorities). Locally, Swale CSP already works closely with the Kent Violence Reduction Unit (VRU) and a Kent Serious Violence Needs Assessment has been produced. This Community Safety Plan highlights the key findings of this assessment and has recommended action to take.
- Impact of Covid: During the last 12 months, partners have been responding to the impact of covid as well as supporting their services and communities to recover. At the time of writing this plan, agencies continue to recover but are seeing impacts to resource levels moving forward, both staffing and budgets. This will have a wider impact on the work of the Community Safety Partnership as partner agencies seek to balance core work with partnership work with reducing resources.
- Violence Against Women and Girls (VAWG): Violence Against Women and Girls remains a national priority following a number of high profile incidents during 2021. Swale CSP have already developed a local response to this issue and will continue to do so as this year progresses, linking in with the Kent Police VAWG Strategy.

### 5. Priorities for 2022/23

A Strategic Assessment is compiled annually to show progress for the Partnership against its current priorities, along with identifying emerging issues, and recommended priorities for the next 12 months.

The priorities for 2022/23 for the CSP were selected by members of the Partnership, taking into account the findings from the strategic assessment and discussions with partners. A series of cross cutting themes have also been identified which are key initiatives that will support the delivery of all of the priorities.

#### Swale CSP Priorities and Cross Cutting Themes 2022/23



## Summary of Swale CSP Priorities

### Priority – Domestic Abuse

**Summary of issue:** Domestic Abuse reported to Kent Police continues to increase, with 5363 incidents in the period October 20 – end September 21. Concerns remain that due to the pandemic, reporting and access to service may have been impacted and that this number does not represent the full picture of the issue.

Within Swale, there are a large number of support services for victims who have responded magnificently to the pandemic and needs of victims. Although how victims access services in the first place continues to be highlighted as an area where more work is needed to ensure that services are promoted in the right way to reach the groups in most need.

There has also been a focus during 2021/22 on provision for perpetrators that are seeking to change their behaviour. There has been good engagement with the local Community Domestic Abuse Perpetrator (CDAP) Programme, but there is more to be done to ensure this programme continues to grow and that all support for perpetrators is well promoted.

Levels of stalking reported to Kent Police continues to grow and there is a need to ensure that all partner agencies are aware of the signs of this and where victims can seek support.

As a result of the Domestic Abuse Act 21, a needs assessment for domestic abuse and in particular in relation to safe accommodation, has been completed by Kent County Council. This needs assessment highlighted a number of key areas of focus and the Kent and Medway Domestic Abuse Strategy has been refreshed. Swale CSP will work closely with other county partners and CSPs, to deliver key actions identified through this strategy.

#### Priority action for 2022/23:

Work collectively to review and improve community access to domestic abuse support

Continue to deliver and develop perpetrator provision

Continue to raise awareness of stalking and access to support

Support the delivery of the Kent Domestic Abuse Delivery Plan.

### Priority – Crime

**Summary of issue:** All crime has continued to reduce in Swale, down by 6.3% or 971 incidents comparing October 20 – end September 21 with the previous year. This includes a reduction in victim based crime, burglary and vehicle crime. However, the partnership is conscious that should there be any localised increases in these types of issues, that there needs to be a multi-agency response and this would continue to be coordinated through the Community Safety Unit.

The town centre centres, for both crime and ASB, during the day and at night, have been a focus for the Partnership during 21/22 and will continue to remain a focus, as locations within the borough of the highest levels of crime and ASB. With covid restrictions easing, the night time economy is now returning, with a need to ensure people are kept safe. Additionally, a need has been identified for a more effective town centre radio scheme, that enables quick sharing of information between town centre business, including in the night time economy, with the Police and CCTV. With the current radio scheme ending, the CSU will be looking at an alternative scheme to be put into place.

Violent Crime has seen an increase, in particular for violence against the person. Some of this relates to domestic abuse, which is discussed in the previous section, however of particular concern to the Community Safety Partnership is serious violence and violence against women and girls.

Violence Against Women and Girls is a national priority, as well of concern locally. An action plan was developed for delivery from October 21 onward, but it is felt there is still more to do on this issue, with ongoing concern highlighted across the County by women and girls. Some of the action already undertaken is discussed in section 3.

In relation to Serious Violence, The Kent and Medway Violence Reduction Unit (VRU) have completed a strategic needs assessment. Swale has seen a volume of 7624 reported Violent Crimes in the period October 20 – end September 21 which was an increase of 2.5%, with 7013 of these being Violence Against the Person. Sittingbourne and Sheerness town centres were highlighted as top locations for harm level and volume of incidents.

The VRU have recommended that as a wider Partnership, there is a need to focus on tackling violence with injury robbery; knives and weapons; drug supply related violence; and sexual violence. It has been recommended that this is tackled jointly with local Community Safety Partnerships, focusing specifically on improved intelligence sharing by communities and partners; a focus on deterring Young Street Groups; and on multi-agency response around repeat Places and People.

#### **Priority action for 2022/23:**

Ensure ongoing localised response to serious violence, including a focus on any identified locations of concern; tackling Youth Street Groups; and ensuring effective and timely information sharing is in place.

To put into place a new town centre radio scheme, to provide an effective link between the CCTV Control Centre, Kent Police and town centre businesses, both in the day time and night time economy.

To deliver a local action plan to tackle violence against women and girls, considering key actions to support possible victims, tackle perpetrators, early intervention and key messaging.

To continue to ensure a multi-agency response is in place to tackle town centre based problems, including within the Night Time Economy.

## Priority – Anti-Social Behaviour

**Summary of issue:** Anti-Social Behaviour (ASB) reported to Kent Police has reduced by 5.2% comparing the current reporting year with the previous but remains at a high volume with 3676 incidents. Optivo, as one of the largest Housing Associations for the area has also seen a reduction, as have Swale Borough Council for environmental issues.

The Community Safety Unit (CSU) continue to support those highest risk and vulnerable victims, with action taken against key perpetrators. Equipment has been provided to these to enable better evidence capture and feelings of safety. This has included tackling youth ASB and Crime and an identified Young Street Group.

There were a number of locations of focus for the CSU including Sittingbourne Town Centre, Sheerness Town Centre, Murston and Thistle Hill. These areas have all seen a reduction in ASB following interventions that have included mobile CCTV, extra patrols and youth diversionary activities.

The CSU have continued to coordinate a response to Community Triggers. These are a mechanism by which a response to ASB can be reviewed by the CSP where at least three incidents have been reported in the past six months; and where it is felt no action has been taken.

Between October 2020 – end September 2021, there were 2 Trigger requests received. One in relation to dog barking and the other a neighbour dispute. Neither reached the threshold and formal reviews were not undertaken.

### **Priority action for 2022/23:**

Tackling ASB forms a large part of the 'business as usual' for the Community Safety Unit. Supporting victims and taking appropriate enforcement action against perpetrators will continue.

Focus will remain on tackling youth related ASB and Young Street Groups, through enforcement and diversionary activities.

Focus will also remain on reducing ASB in identified hotspot locations through a multi-agency problem solving approach.

## Priority – Supporting Vulnerable People

**Summary of Issue:** Identifying and supporting vulnerable people has been a key priority for the Community Safety Partnership for a number of years. There have been key successes, particularly through the work of the vulnerability panel which has already been highlighted in section 3. Additionally, the recently created housing support needs meeting has shown the excellent partnership work in place to support those that are homeless, but also identifying the further work that is always needed – particularly for the prison cohort.

Through both of these groups, and from conversations with key partners, support for those customers with the most complex needs, must be a focus for the CSP. Due to the nature of their needs and lives, access to services in a traditional sense may not be possible and additional resource or a



different approach is needed to help these customers to engage.

Modern slavery is a continued concern highlighted by partners – in that it is believed to still be largely undetected, but due to the demographic of Swale, is highly likely to be taking place. A different approach to tackling this issue is needed, along with further awareness raising and training for staff across the partnership.

Preventing Extremism has been a duty for partner agencies for many years, with county wide mechanisms for referral and support well embedded. However, due to referral levels reducing for Swale, a need for further training and awareness raising with partners and communities has been identified to ensure that those that may need support are identified.

An emerging issue has been identified through Children Social Services - nationally and locally, non-accidental deaths in babies has been highlighted as a high concern. Work needs to take place with all partners to ensure that there is awareness of this issue and that partners are aware of possible signs and how to action.

**Priority action for 2022/23:**

Review partnership response to modern slavery and further awareness raising action that can be put into place.

Review how those with the most complex needs can access services and alternative actions that could be put into place

Continued awareness raising and delivery of training on Preventing extremism to partners and communities

Support the local development of actions to tackle non-accidental deaths in babies.

**Cross Cutting Theme – Reducing Reoffending**

**Summary of theme:** Reducing reoffending is a cross cutting theme across all priorities already discussed.

For many offenders, their needs are complex and there are some common issues identified in addressing these, including access to GPs and mental health services. They also often have housing needs, but common themes in relation to these are being monitored through the Housing Needs sub-group.

For the more prolific offenders, the Integrated Offender Management (IOM) programme brings together partners to look at the needs of each individual offender and agree next steps. The criteria for this programme has recently been refreshed and there is a need to ensure all partners continue to work collaboratively.

As already discussed in the domestic abuse section, in relation to domestic abuse, work needs to continue on ensuring that there is adequate provision for offenders through court mandated programmes and support and for those recognising a need to change their own behaviour.

As already discussed in the ASB section, there is an ongoing need to tackle offenders, but particularly support young offenders or those at risk of becoming involved with young street groups.

**Priority action for 2022/23:**

Many priority actions linked to this theme have been identified underneath other sections of this report. One additional priority action is to:

To support the ongoing engagement by partners in the Integrated Offender Management (IOM) programme to support the needs of the most prolific offenders.

**Cross Cutting Theme – Communication and Information Sharing**

**Summary of theme:**

The need for clear communication across the agencies within the community safety partnership, and to the community, has already been made clear across the discussions on other priorities.

In relation to domestic abuse, there are many aspects for which there needs to be clear messaging to communities and partners to ensure appropriate identification of concerns and access to services. Through the County Domestic Abuse Partnerships, a county communications campaign – Know, See, Speak out – has been developed and locally this will be supported.

Locally, there is also a need to ensure that support for perpetrators is clearly communicated, as well as focused messaging for young people, linked to domestic abuse and violence against women and girls.

With a large amount of work and messaging across partners needed, an internal newsletter will enable the frequent sharing of key messages.

**Priority action for 2022/23:**

Support the delivery of the county-wide domestic abuse communications campaign, with local focus on perpetrator and young people messaging.

Delivery of a quarterly partnership newsletter

**Cross Cutting Theme - Young People**

**Summary of theme:**

Supporting young people is a cross cutting theme across all priorities and many of the key issues for the partnership to focus on in relation to them have already been highlighted.

Supporting girls and younger women through the Violence Against Women and Girls action plan, will enable this group to put forward any concerns over safety and to engage in activities to improve their safety. This will be promoted through the communications work planned.

As discussed in the Domestic Abuse section, through the Domestic Act 2021, children and young people are identified as victims in their own right and there is a continued need to ensure there is adequate provision of support for them. Within Swale, we had already begun to identify local services for children and young people, however this needs to be revisited and ensure joint working with Kent level partnerships.

As discussed in the crime and ASB sections, tackling youth related ASB/Crime and Young Street Groups is a priority for Kent and Swale CSP for the upcoming year. Another way in which this can be achieved, through earlier intervention, is by building young people's resilience. A key time period at which they can become more vulnerable is the transition from primary school to secondary school.

### **Priority action for 2022/23**

To map local domestic abuse support services for children and young people and to work with Kent partnerships to determine the most appropriate mechanisms to address any gaps identified.

Through the District Adolescent Contextual Safeguarding Meeting (DACSM) a targeted approach will be taken to locations identified as a place where young people at risk may frequent; or may be contributing to an escalation in their risk. This multi-agency work may include youth outreach, other diversionary work, mobile CCTV, other environmental guardianship and other actions as considered appropriate for those locations.

To deliver 'Safety in Action' to Year 6 age school children, to assist with key skills in their transition to secondary school, aiming to reduce their vulnerability and likelihood of becoming a victim/offender of crime.

## 6. Action Plan 2022/23

No.	Action	Desired Outcome	Key Milestones	Timescales	Lead agency
<b>Priority 1: Domestic Abuse</b>					
1.1	Delivery of Domestic Abuse Community Access project	Increased access to domestic abuse services by victims, including harder to reach target groups	Development of community access action plan Delivery of action plan	April 22 By March 23	Domestic Abuse Group – Community Access Task and Finish Group
1.2	Development and delivery of perpetrator programmes for Swale residents	Increased provision of support to domestic abuse perpetrators	Review existing perpetrator provision available within borough Linkage with KCC regarding commissioning of any services Commissioning of any additional Swale based services Promotion of perpetrator services	April 22 Ongoing May 22	Domestic Abuse Group
1.3	Review local provision and awareness on stalking	Increased awareness of stalking and local service provision.	Strategic Discussion by CSP Exec regarding stalking – current issues and service provision Delivery of agreed actions. Delivery of training to partners	By September 22 By March 23 October 22	Executive group/Domestic Abuse Group
1.4	Support delivery of County Domestic Abuse Delivery Plan	Increased understanding of domestic abuse and focused action on key priority areas.	Participation in county meeting groups and delivery of agreed actions from Delivery Plan including: Provision of data for needs assessment Support rollout of Domestic Abuse Champions Programme Support development of ‘Sanctuary’	Ongoing Sept 22 By Sept 22 By March 23	Domestic Abuse Group

			provision		
<b>Priority 2: Crime</b>					
2.1	Ensure appropriate Serious Violence response is in place	Reduction in serious violence across borough	Ensure multi-agency response to place and/or people based issues when an increase in serious violence is identified  Focus on deterrence activities for Young Street Groups  Improved intelligence sharing by partners and communities on knife crime (promotion of Community Voice)	As required	CSU; District Adolescent Contextual Safeguarding group (DACSM)
2.2	Establish a new town centre 'shop safe' radio scheme	Reduction in crime and ASB across all town centres	Business case for new SBC led scheme developed  Rollout of new scheme	End April  May onwards	CSU
2.3	Delivery of Violence Against Women and Girls Action Plan	Increased feelings of safety by women and girls; reduced violence against women/girls in public spaces	Delivery of VAWG action plan to include:  Comms and engagement at key periods (Jubilee and Christmas)  White Ribbon Campaign  Rollout of Safe Havens  Addressing identified location based concerns  Rollout of Best Bar None  Schools based young person actions	Ongoing	CSU/Town Centre Meeting
2.4	Review of Town Centre Safety activity, including within the Night Time Economy	Increased safety in town centres	Review of Town Centre Safety Meeting Terms of Reference  Ongoing monitoring of town centre based concerns and actions to address	May 22  Ongoing	CSU/Town Centre Safety Meeting

<b>Priority 3: ASB</b>					
3.1	Delivery of response to ASB hotspots	Reduction of ASB in identified hotspots	Delivery of 'Focus Area' approach to identified ASB hotspots	As required	CSU
3.2	Delivery of enforcement and diversionary response to youth related ASB	Reduction in youth related ASB	Ongoing enforcement response to young perpetrators Targeted diversionary activities	On going Ongoing	CSU
<b>Priority 4: Supporting Vulnerable People</b>					
4.1	Review Partnership approach to modern slavery	Increased understanding by public and partners of signs of modern slavery	Strategic planning discussion around modern slavery by CSP Executive Delivery of agreed actions Delivery of Partnership training	June 2022 By March 23 December 22	CSP Executive/CSU
4.2	Review of access to services by those with complex needs, including those with mental health and substance misuse needs.	Increased access to key services by those with complex needs.	Strategic planning discussion around complex needs (mental health and substance misuse) Delivery of agreed actions Pilot of alcohol outreach worker for vulnerability panel clients	June 2022 By March 23 By March 23	CSP Executive
4.3	Ongoing Partnership response to Preventing Extremism	Increased awareness of Prevent agenda by partners and communities	Delivery of Prevent Training to partners Delivery of InCel training to partners Work with Kent Prevent team on community inputs regarding Prevent Support development of annual Counter Terrorism Local Profile and any local actions required	Sept 22 Sept 22 Ongoing Ongoing	CSU
4.4	Support local approach to	Reduction in deaths of	Discussions with key children partners to	April 22	CSP Executive

	tackle non-accidental deaths in babies	babies	determine wider partnership support for this issues  Delivery of any agreed actions	Ongoing	
<b>Cross Cutting Theme 1: Reducing Reoffending</b>					
5.1	Ongoing engagement with the Integrated Offender Management programme	Reduced offending by prolific offenders	Attendance by partners at IOM  Promotion of IOM to partners as required	Ongoing	CSU/Probation
<b>Cross Cutting Theme 2: Communication and Information Sharing</b>					
6.1	Support delivery of Kent-wide Domestic Abuse Communications Plan	Increased awareness of services and key messages linked to domestic abuse	To share messaging developed by County DA Media and Comms group for the county Know, See, Speak Out campaign and actively participate in specific campaigns	By March 23	DA Group
6.2	Development of local young people/perpetrator messaging around domestic abuse/violence against women and girls	Increased understanding of service provision and what to do by community.	Link with county campaigns as appropriate  Develop young person VAWG based campaign  Deliver key messages around perpetrators/changing behaviour	Ongoing  Sept 22  By Sept 22	DA Group
6.3	Delivery of Partnership Newsletter	Increased awareness by partners of work of CSP	Quarterly newsletter circulated	Quarterly (April, July, October and January)	CSU
<b>Cross Cutting theme 3: Young People</b>					
7.1	Review domestic abuse provision for children and young people	Increased awareness of services available for children and young people in the borough.	Mapping of existing children and young people domestic abuse services and identification of gaps.  Linkage with KCC Commissioning team	By June 22  Ongoing	DA group

			<p>to determine any increase in CYP services in this area.</p> <p>Participation in County DA Delivery Plan actions linked to children and young people</p> <p>Action plan developed for resolving gaps in service.</p>	<p>Ongoing</p> <p>By March 23</p>	
7.2	Delivery of diversionary/engagement based activities in ASB or crime hotspots	Reduction in youth related crime/ASB or Young Street Groups	Location based engagement/diversionary activities delivered	Ongoing	CSU/DACSM
7.3	Deliver Safety in Action to year 6 primary school students	Reduction in likelihood in them going onto become victims of crime/ASB.	<p>Planning of event and engagement with schools</p> <p>Delivery of event</p>	<p>By April 22</p> <p>By June 22</p>	CSU



## 7. Delivery of Priorities

The Swale Community Safety Partnership priorities will be delivered by a number of mechanisms. Some will be delivered and monitored via the Executive Group or sub-groups. Others will be delivered directly by staff within the multi-agency Community Safety Unit (CSU).

The below table details the key tasks of each of these groups.

Meeting Group	Key Functions
Executive Group	Thematic strategic discussions of key issues within CSP Plan  Strategic updates from all statutory partners  Oversight of all subgroups  Performance Monitoring  Funding Monitoring
<b>Sub-Groups</b>	
Domestic Abuse Group	Mapping of key issues and development of solutions  Support delivery of Kent and Medway Domestic Abuse Strategy and Local Action Plan  Coordination of response to wider Violence Against Women and Girls issues  Sharing of learning from Domestic Homicide Reviews (DHRs)  Coordination of any training/communication  Oversight of implementation of Domestic Abuse Act and monitor for local issues
Housing Needs and Support Meeting	Six weekly meeting to identify common issues affecting vulnerable individuals in relation to housing need  Consider strategic updates from partners related to housing
Vulnerability Panel	Monthly meetings to discuss vulnerable adults at risk of crime/ASB; self-neglect; or non-engagement with services.  Identification of key trends or themes affecting this cohort
Serious Organised Crime Panel	Six weekly meeting to discuss organised crime groups (OCGs); individuals of note; gangs/county lines; and Youth Street Gangs.
District Adolescent Contextual Safeguarding Meeting	Monthly meeting to discuss individuals and locations of concern in relation to young people.

	Lead on actions to tackle identified locations of concern.
Town Centre Safety Group	Bi-monthly group to discuss town centre based operation concerns (day time and night time economy)  Oversight of town centre/night-time economy based violence against women and girls activity
Weekly Tasking and Coordination Group	Weekly meeting to discuss ASB victims/offenders; and key locations of concern.
<b>Staffing Resource</b>	
Community Safety Unit	Support to High risk ASB victims  ASB Enforcement  Coordination of Community Triggers  Coordination of Keep Safe scheme  Problem Solving for location based problems (ASB and Crime)  Provision of crime/ASB reduction equipment  Support to Vulnerable Adults

Partners will commit staffing resource to each of these group as relevant to their agency. Additionally, a grant provided by the Police and Crime Commissioner to the Community Safety Partnership will be allocated towards the delivery of this plan.

If further resources are needed for completion of actions, further funding may have to be sought.

## **8. Performance Monitoring**

The performance of the Community Safety Plan will be undertaken by the Executive Group on a quarterly basis by means of an exception report. Monitoring will be undertaken on key performance indicators and progress against identified actions.

## **9. Risk Assessment**

Key risks to the delivery of this Community Safety Plan are considered annually by the Partnership.

The main risk identified for 22/23 is resourcing. The impact of the Covid-19 pandemic continues to impact on service delivery by all partner agencies. Partners are asked to continue to update at the Executive group on any strategic concerns and resourcing issues. Resourcing concerns have been highlighted by all partners in conversations as part of preparation of this Community Safety Plan. Both in terms of finances and proposed budget cuts, as well as the impact of recruitment problems. This has been factored into this years Community Safety Plan through a reduced action plan; and regular conversations by partners at a strategic level will aim to allow for any other mitigation measures as needed to ensure the delivery of this plan.